

Bin-pong: Workplace Waste Sorting

YOU WILL NEED:



Ping Pong balls or similar

Marker pens

Labelled waste bins for each waste stream. E.g. landfill, paper and plastic, glass, food waste. If you're not sure which categories you need, confirm with your business waste contractor



A list of most thrown away items. Audit your waste bins if you don't have this information



A bit of research to confirm the correct waste disposal stream for your business and waste contractor



15 minutes. Consider adding on a team meeting

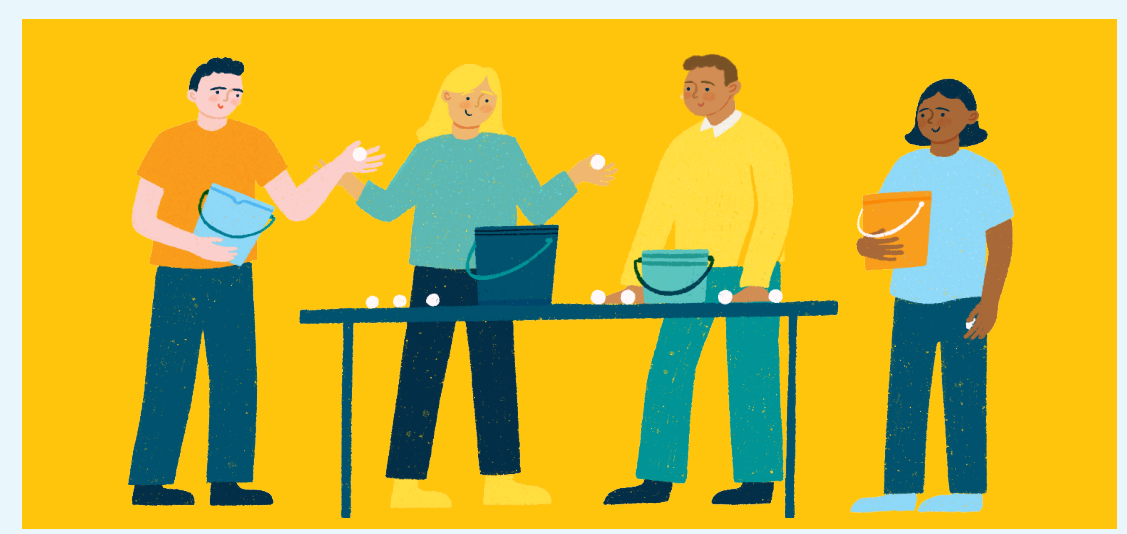
HOW TO PLAY:



1 Label the ping-pong balls with the items most frequently found in your company bins. Make sure to have enough balls that each player has a set.



2 Players have between 2-5 minutes (you choose the time limit) to throw the balls into the labelled waste bucket they think is correct for each item.



3 Time is up! Sort through each waste stream in turn and discuss the results as a group – which items were correctly sorted and why.



4 Optional extra – Use different coloured ping pong balls for different teams and score the most correct throws. Repeat the game at the end of the team meeting (and as often as you like) to track improvement.